



[www.eos2011.com](http://www.eos2011.com)



**87<sup>th</sup> Congress of the  
European Orthodontic Society**

19-23 June 2011  
Istanbul - Turkey

**EOS 2011**

**FINAL  
ANNOUNCEMENT**



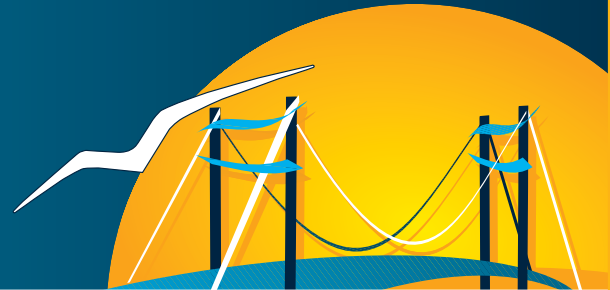


## CONTENTS

WELCOME	03
COMMITTEES & IMPORTANT ADDRESSES	04
SCIENTIFIC PROGRAMME	05
AWARDS	23
PROGRAMME OUTLINE	24
PROGRAMME AT-A-GLANCE	25
SOCIAL EVENTS	26
TOURS	28
GENERAL INFORMATION	37
REGISTRATION	39
ACCOMMODATION	42

### **DATES to remember**

Deadline for submission of abstracts	1 December 2010
Deadline for early registration	1 April 2011



## WELCOME

Dear Friends and Colleagues,

It is my distinct honour and sincere pleasure to invite you to the **87<sup>th</sup> Congress of the European Orthodontic Society** to be held in Istanbul, Turkey, on 19-23 June 2011.

We are very proud and also very excited about this event, as it will be the first European Orthodontic Society Congress ever held in Turkey.

Istanbul, the capital of Roman, Byzantine and Ottoman empires, is one of the world's most magical and enchanting cities. Walking on the streets of Istanbul you can feel the splendour of the past along with the cultural and commercial pulse of a modern city. The European Capital of Culture for 2010, Istanbul is hosting numerous cultural and artistic events, and exhibitions. The congress venue, Istanbul Convention & Exhibition Center (ICEC), is located in a central and beautiful area of the city, with close proximity to many hotels, museums and shopping areas.

The scientific programme will include hot topics such as bone anchorage, surgery assisted orthodontics and 3D imaging, as well as providing a new insight in TMJ and contemporary dentofacial treatment. The Sheldon Friel Memorial Lecturer 2011 is Prof. Ravindra Nanda who will give a five-decade perspective of biomechanics and aesthetic concepts. Keynote lectures and pre- and post-symposium courses will be delivered by some of the most distinguished speakers in the orthodontic field. There will be plenty of opportunities to discuss and share research interests and to present original work.

An entertaining social programme will be available for participants and guests. The evening events of the congress will take place in attractive locations which reflect the rich spirit of Istanbul. Congress Outing Day and Silver Mill Competition will be held in the grounds of Topkapı Palace, where the attendants will discover the amazing treasures of the old imperial residence. The month of June in Istanbul offers nice weather with sunshine to fully enjoy the city. You will have a chance to cherish your old friendships and establish new ones in a unique atmosphere.

Eager for an exchange of information in the most exquisite surrounding of Istanbul, we are looking forward to welcoming you all in 2011.

Yours sincerely,

**Nejat Erverdi**  
Congress President





# EOS 2011 ISTANBUL

## COMMITTEES & IMPORTANT ADDRESSES

### Organised by

European Orthodontic Society  
Flat 20, 49 Hallam Street  
London W1W 6JN, United Kingdom

### President EOS 2011

Nejat Erverdi

### Scientific Committee

#### Chairman

Hakan N. İşcan

#### Secretariat

Ahu Acar

#### Members

Nejat Erverdi  
David Suarez Quintanilha  
Maja Ovsenik  
Susan Cunningham  
Frank Weiland  
Fraser McDonald

### Local Organising Committee

Abdülvahit Erdem  
Arzu Arı-Demirkaya  
Banu Çakırer  
Erhan Özdiler  
İlken Kocadereli  
Jalan Devocioğlu Kama  
Mustafa Ateş  
Müyesser Saraç  
Sibel Biren  
Şirin Nevzatoğlu  
Tamer Türk  
Tancan Uysal  
Toros Alcan  
Tülin Arun  
Yaşar B. Göyenc

### Congress Web Page

### Congress Venue

### Useful Web Pages

### Visa Requirements

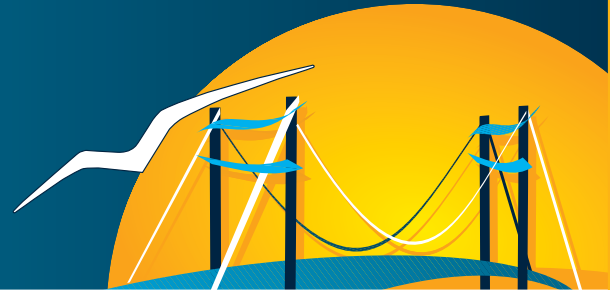
### Information, Exhibition & Travel

Cnidus Congress Organization Services Ltd. (PCO)  
Valikonagi Cad. Akkavak Sok. No: 17 / 2 TR-34365 Nisantasi/ Istanbul, Turkey  
T. +90 212 291 1906 F +90 212 219 0588 • www.cnidus.com

### Registration and Hotel Info (Tour & Transfer Reservation) Exhibition

www.eos2011.com  
www.icec.org  
http://www.turizm.gov.tr  
http://www.theguideturkey.com  
http://www.mfa.gov.tr

registration@eos2011.com  
info@eos2011.com  
exhibition@eos2011.com



## SCIENTIFIC PROGRAMME

### Sheldon Friel Memorial Lecturer

**Ravindra Nanda** Biomechanics and Esthetics in Contemporary Orthodontics:  
A Five-Decade Perspective

### Keynote Lecturers

**Jeff Okeson** TMJ from Different Perspectives  
**Bakr Rabie** TMJ from Different Perspectives  
**Domingo Martin** TMJ from Different Perspectives  
**Lucia Cevidanes** 3D Imaging  
**Juan Martin Palomo** 3D Imaging  
**Albino Triaca** Bone Anchorage and Adjunctive Surgery in Orthodontics  
**Hyo-Sang Park** Bone Anchorage and Adjunctive Surgery in Orthodontics  
**Dieter Drescher** Bone Anchorage and Adjunctive Surgery in Orthodontics  
**Serge Dibart** Bone Anchorage and Adjunctive Surgery in Orthodontics  
**Nazan Küçükkeleş** Contemporary Dentofacial Treatment Modalities  
**Marco Rosa** Contemporary Dentofacial Treatment Modalities  
**Serdar Üşümez** Free Topics

### Pre-Congress Course

**Albino Triaca** Distraction Procedures in Orthodontics

### Postgraduate Course

**Hyo-Sang Park** Microimplants in Orthodontics

### Post-Congress Course

**Jeff Okeson** Management of TMJ Disorders

### Congress Topics

- Contemporary Dentofacial Treatment Modalities
- 3D Imaging
- Bone Anchorage and Adjunctive Surgery in Orthodontics
- TMJ from Different Perspectives
- Free Topics

### EBO Examination Presentation

The EBO examination will take place at the Istanbul Convention & Exhibition Centre (ICEC) on 18-19 June 2011 at 08:00-18:00.

Information about the examination can be found on the EOS website [www.eoseurope.org](http://www.eoseurope.org).

The application deadline for the EBO examination is 31 January 2011. Application forms can be downloaded from the EOS website. An exhibition and oral presentation of selected cases will take place during the congress.

## SCIENTIFIC PROGRAMME

### Sheldon Friel Memorial Lecturer



**Dr. Ravindra Nanda**

Dr. Ravindra Nanda is at present UConn Alumni Endowed Chair, and Professor and Head of the Department of Craniofacial Sciences and Chair of division of Orthodontics, University of Connecticut, Farmington, Connecticut, U.S.A.

He received his dental training from Lucknow University, India in 1964. He received his orthodontic training first at Lucknow, India and then from Nymegen, The Netherlands, and the University of Connecticut. He also received a Ph.D. for the University of Nymegen in 1969. He was an Assistant Professor of Orthodontics at Loyola University, Illinois from 1970 to 1972 and since 1972 he has been associated with the University of Connecticut.

Dr. Nanda has done extensive research during the last forty years in the areas of cleft lip and palate, orthopedic forces and on long-term growth with orthognathic surgery in adolescents. In recent years, his major thrust has been in development of orthodontic wires, clinical orthodontic trials and application of biomechanics in a busy orthodontic practice.

Dr. Nanda has been author and co-author of five orthodontic books and more than one hundred scientific and clinical articles in major journals. He is on the editorial board of seven different national and international orthodontic journals. He is an associate editor of Journal of Clinical Orthodontics.

He is an active member of various organizations, including the American Association of Orthodontists, European Orthodontic Society, and Edward H. Angle Society. Dr. Nanda is a Diplomate of the American Board of Orthodontics. He has given numerous named lectures at national and international societies including Mershon Lecture at American Association of Orthodontics.

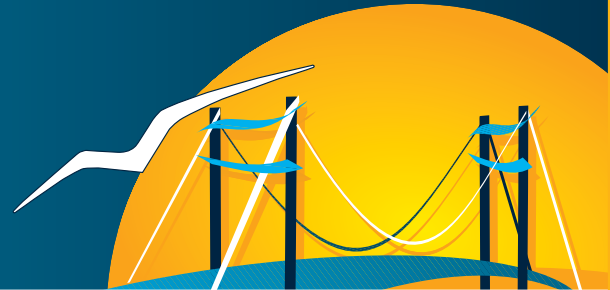
Dr. Nanda is a co-editor of a book Retention and Stability. His most recent books are Biomechanics in Clinical Orthodontics and Biomechanic and Esthetic Strategies In Clinical Orthodontics, Temporary Anchorage Devices in Orthodontics. His new book is titled Current Therapy in Orthodontics.

### Biomechanics and Esthetics in Contemporary Orthodontics: A Five Decade Perspective

In recent years significant emphasis has been placed on technology and brackets in providing orthodontic care.

This presentation will discuss that without optimal mechanics obtaining esthetic, occlusion and functional objectives will remain elusive. Biomechanics is a common denominator among all the orthodontic 'techniques' irrespective of brackets used to treat a patient. Esthetics and especially smile zone of the face has taken a new dimension, as more patients seek it and we as orthodontists are more cognizant of it. If patients have negative or gingival smile or canted anterior and/or posterior occlusal planes or similar complex malocclusions; they cannot be optimally treated without proper application of mechanics.

This presentation will give a five decade perspective of various biomechanics and esthetic concepts and how to moderate severe malocclusions can be treated with simple appliances delivering predetermined forces.



## SCIENTIFIC PROGRAMME

### TMC from Different Perspectives

#### Keynote Lecturer



**Dr. Jeff Okeson**

Dr. Okeson is Professor, Chair of the Department of Oral Health Science and Director of the College's Orofacial Pain Center, which he established in 1977. Dr. Okeson has more than 200 publications in the area of occlusion, TM disorders and orofacial pain in various national and international journals. The sixth edition of Dr. Okeson's textbook *Management of Temporomandibular Disorders and Occlusion* is published by C. V. Mosby (Elsevier) Publishers. This text is used in most of the United States dental schools as well as in many other countries. It has been translated into eleven different foreign languages. In addition to this text, Dr. Okeson has authored the sixth edition of *Bell's Orofacial Pains* which is published by Quintessence Publishing Company and widely used in orofacial pain programs throughout the world.

Dr. Okeson is a past President of the American Academy of Orofacial Pain and former editor of the Academy's Guidelines. He is a founding Diplomate and past President of the American Board of Orofacial Pain. Dr. Okeson is a very sought after lecturer on the subject of TMD and orofacial pain and has presented more than 700 invited lectures on the subject of TMD and orofacial pain in 48 different states and in 45 different countries. He has received the campus wide University of Kentucky "Great Teacher Award" and is the recipient of the first ever "Distinguished Alumni Award" from the College of Dentistry. Dr. Okeson has also received "The International Dentist of the Year Award" from the Academy of Dentistry International. This is the highest award recognized by this Academy and was given to him in recognition of his worldwide efforts in providing education in the area of temporomandibular disorders and orofacial pain.

---

### The Differential Diagnosis of TMD: The Great Challenge

Our understanding of temporomandibular disorders has greatly expanded in recent years. Although our knowledge is still not complete, we are now able to manage our patient's pain problems far better than ever before. We have learned that some TM disorder patients require dental therapy and others do not. It is the primary responsibility of the clinician to be able to identify those patients who can benefit from dental therapies such as orthodontics from those who will not. This presentation will focus on the difficult task of the differential diagnosis of temporomandibular disorders.

## SCIENTIFIC PROGRAMME

### TMC from Different Perspectives

#### Keynote Lecturer



**Dr. Bakr Rabie**

Bakr Rabie is a Professor of Orthodontics in the Faculty of Dentistry at The University of Hong Kong. He obtained his Certificate of Proficiency in Orthodontics, Master of Science, and PhD from Northwestern University, USA.

Professor Rabie was also the Postgraduate Programme Director in Orthodontics, the Founder and Convenor of Biomedical and Tissue Engineering Research, and the Director of the Centralized Research Laboratories, The Faculty of Dentistry, The University of Hong Kong. In 1997, he became a Fellow of Hong Kong Academy of Medicine (Dental Surgery) and Fellow of College of Dental Surgeons of Hong Kong (Orthodontics); and obtained the Fellowship in Dental Surgery ad hominem of the Royal College of Surgeons of Edinburgh in 2005.

In addition, Professor Rabie is an Editorial Board member of the Orthodontics and Craniofacial Research, The Open Dentistry Journal, International Journal of Dentistry and International Journal of Oral Science, reviewer of the Angle Orthodontists, Journal of Dental Research, International Journal of Connective Tissue Research, International Journal of Paediatric Dentistry, Gene Therapy and Honorary Editorial Advisor of Hong Kong Dental Journal.

### Association Studies and Their Impact on Diagnosis and Treatment of Mandibular Retrognathism

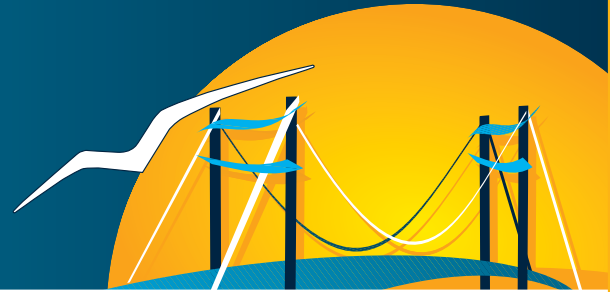
Association studies offer a powerful tool to correlate genetic variations and phenotypic trait differences in a genetic population.

**Aim:** To identify genetic variations, i.e. single nucleotide polymorphism (SNP), that is correlated with skeletal Class II malocclusion, and to utilize these SNPs to identify good responders and poor responders to functional appliance therapy.

**Materials and methods:** 162 mandibular retrognathism southern Chinese subjects and 198 subjects with normal sagittal jaw relationship were recruited into this case-control study. Peripheral venous blood was extracted for harvest of genomic DNA. 118 SNPs from 16 genes, which are involved in growth of the mandibular condyle, were genotyped using the Sequenom platform. Association test was conducted with Chi-square test. Hardy-Weinberg equilibrium test and Linkage Disequilibrium (LD) test were executed with Haploview software. Further functional analysis was carried out to test the role of the identified gene into condylar growth in experimental animals.

**Results:** Two SNPs in gene LEPR, rs10449758 (OR=2.176 with 95%CI=1.285-3.686 for GG, compared with AA and AG genotypes) and rs7418057 (OR=1.891 with 95%CI=1.101-3.246 for GG, compared with AA and AG genotypes), were associated with increased susceptibility to mandibular retrognathism. Allele G in rs10449758 ( $p=0.0032$ , OR=2.012 with 95%CI=1.255-3.226) and rs7418057 ( $p=0.0115$ , OR=1.888 with 95%CI=1.147-3.110) was significantly associated with the trait. LD block which harbors rs7418057 and another SNP rs4655555 in LEPR (with marginal p-value) had different haplotype structure distribution between cases and controls. Of the three haplotypes identified, haplotype (GA) was more prevalent in case group (0.825 vs. 0.752), while haplotype (AT) was more frequently found in controls (0.083 vs 0.146), indicating the trait causing possibility of haplotype (GA). Functional analysis revealed decreased condylar growth in the presence of mutation of LEPR.

**Conclusions:** We identified association between polymorphisms in LEPR gene and mandibular retrognathism.



## SCIENTIFIC PROGRAMME

### TMC from Different Perspectives

#### Keynote Lecturer



**Dr. Domingo Martin**

Dr. Domingo Martin received his MD and DDS from University of Bilbao. He completed his Master in Orthodontics at University of Valencia. He received his Diploma for Functional Occlusion from Roth Williams Center between 1991-1993. He is an Active Member of Angle Society Europe and became a Diplomate of European Orthodontic Society in 2008. He is Director of Roth-Williams Center for Functional Occlusion in Spain and Portugal and, is also President of Roth-Williams International Society of Orthodontics. He is currently a Visiting Professor at International University of Catalunya -Barcelona Orthodontic Department and at University Complutense of Madrid -Department of Periodontics. Dr. Martín has given courses and conferences in Spain, Portugal, France, Italy, Germany, Russia, China, England, Austria, Israel, Chile, Argentina, Mexico, Uruguay, India Turkey, Dubai(U.A.R.), Japan and USA. He maintains a private practice limited to orthodontics in San Sebastian, Spain.

### Occlusion, Condylar Position, Orthodontics, Orthognathic Surgery and TMD

I am well aware of the fact that the literature today does not hardly support the role of occlusion in the etiology of TMD. This might be the vision of researchers but those of us who work as clinicians and treat TMD cannot agree with the "scientific" evidence. We have been working on too many patients for many years and have seen results on a long term basis when treating the occlusal related TMD patient. We therefore look at the literature as not representing all the facts. This leads me to remind ourselves that in life nothing is black or white, gray exists. We cannot throw out occlusion as if it had no importance in the etiology of TMD. We must realize that in some cases occlusion does play a role, but in other cases occlusion does not play a role. This, therefore, obligates the clinician to first of all diagnose, and what is more important, to do a differential diagnosis to be able to treat those cases where occlusion is the major factor in the development of TMD. In my presentation I will explain the importance of diagnosis and orthodontics in the treatment of patients with TMD. I will illustrate my talk with many cases.

## SCIENTIFIC PROGRAMME

### 3D Imaging

#### Keynote Lecturer



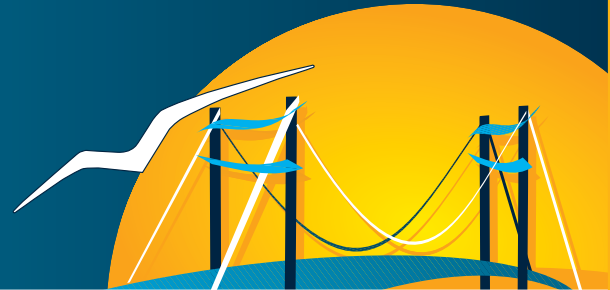
**Dr. Lucia Cevidanes**

Dr. Lucia Cevidanes, Assistant Professor in the Department of Orthodontics, UNC School of Dentistry, has published over 40 scientific papers on 3D imaging since 2003. Her work has been recognized by the American Association of Orthodontics Graber Award in 2005 and the Dewel Award in 2006 for the best clinical papers in the AJODO.

---

### 3D Treatment Outcomes of Orthognathic Surgery

Clinical treatment decisions always should be based on information from treatment outcomes, from clinical trials if possible, but always from a series of consecutively treated patients. The extensive UNC database includes 5 year follow-up of orthognathic surgery using cone-beam CT to assess diverse skeletal problems such as asymmetry and skeletal Class II and Class III malocclusions. Superimposition of CBCTs on stable structures of reference now allow assessment of 3D dental, skeletal and soft tissue changes for both growing and non-growing patients. 3D findings reveal more variability in post-surgical stability than previously reported in 2D studies.



## SCIENTIFIC PROGRAMME

### 3D Imaging

#### Keynote Lecturer



**Dr. Juan Martin Palomo**

Dr. Juan Martin Palomo is the Program Director of Orthodontics, and the director of the Craniofacial Imaging Center at Case Western Reserve University in Cleveland, Ohio USA. Shortly after getting his orthodontic training at Case, Dr. Palomo's academic career started off as a Research Associate in the prestigious Bolton-Brush Growth Study Center. Dr. Palomo has presented both nationally and internationally, and authored over 30 peer-reviewed publications on the topic of informatics and craniofacial imaging in journals like the American Journal of Orthodontics and Dentofacial Orthopedics, the Journal of Maxillofacial Surgery, and the Oral Surgery, Oral Medicine, Oral Pathology, Oral Radiology, and Endodontology Journal among others. Dr. Palomo's career contributions to craniofacial imaging have been recognized through research awards in both medical and dental fields, from organizations such as the American Association of Orthodontists Foundation, and the American Society of Anesthesiologists.

Dr. Palomo has been member of the IADR and the Craniofacial Biology Group for over 10 years, and he strives to bring craniofacial biology to the fore front of the community at large as he is the primary advisor for the Medical Imaging Exhibit at the Great Lakes Science Center. Additionally, he is a board certified orthodontist, and an active member of both the American Association of Orthodontists and the American Academy of Oral and Maxillofacial Radiology. Dr. Palomo is the president elect for the Omnicron Kappa Upsilon National Honor Dental Society.

---

### Using 3D Radiography in Clinical Orthodontics

The digital volumetric tomography era has begun, and we now have access to significant additional diagnostic information. This presentation will show how Case Western Reserve University (CWRU) is extracting and using volumetric tomograms on the day to day basis for every orthodontic patient in our clinic. From posterior buccolingual inclination to surface area analysis and volumes, Dr. Palomo will show current CWRU's protocols and recommendation on what to do with this 3D imaging modality that is quickly becoming part of the routine records.

## SCIENTIFIC PROGRAMME

### Bone Anchorage and Adjunctive Surgery in Orthodontics

#### Keynote Lecturer



**Dr. Albino Triaca**

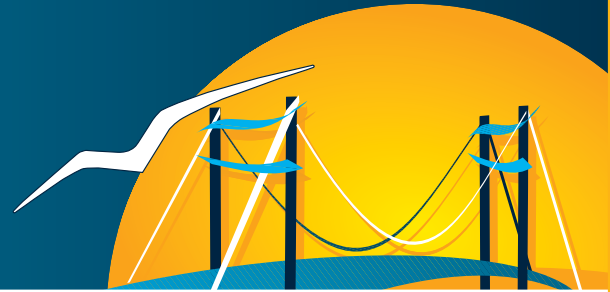
Dr. Triaca completed his medical and dental education in 1978 and 1984, respectively. The title of his thesis was "Das Gesicht als definierbares Modell-The face as a definable model". He received General Surgery and Pediatric General Surgery training between 1978 and 1981 in Zürich. He completed his Maxillofacial Surgery training in Zurich University, between 1981 and 1987, under the supervision of Prof. Obwegeser. Between 1987 and 1990, he was Head doctor of Department of Maxillofacial Surgery in Zürich University. In 1990, he received Fellowship in Plastic Surgery from Division of Plastic Surgery, University of Miami, USA. Since 1990, he has been Head of Maxillo-Facial-Center in Klinik Pyramide am See in Zürich. He is also Head of Maxillofacial Surgery Center in European Center for Maxillofacial and Aesthetic Surgery in San Marino.

---

### Dentoalveolar Decompensation, A New Way

One of the requirements for an aesthetic facial appearance is dentoalveolar decompensation. To date this has been the remit of the orthodontist. In a lot of cases however orthodontic movement alone has its limitations. The introduction of mandibular and maxillary anterior dentoalveolar osteodistraction together with the recently developed mandibular border osteotomy, also known as the wing osteotomy, has enabled us together with orthodox orthodontics to achieve perfect dentoalveolar proportions.

This has led to a new understanding of the complex surface anatomy of the face and consequently to a new facial surgical planning philosophy. The intention of this presentation is to illustrate these new treatment modalities and emphasize the indications.



## SCIENTIFIC PROGRAMME

### **Bone Anchorage and Adjunctive Surgery in Orthodontics**

#### **Keynote Lecturer**



**Dr. Hyo-Sang Park**

Dr. Park is currently Professor and Chair of the Department of Orthodontics, Kyungpook National University School of Dentistry. He is Vice-dean-research affair at the School of Dentistry and Director of Orthodontic Research Center at Kyungpook National University Hospital.

His research background includes immunohistochemical studies for neurotransmitters following tooth movement and growth studies using rats as experimental animal.

He did pioneer works and extensive research on development of microimplants since 1998. He has used microimplants for 12 years and owns ten patents and wrote numerous international articles, six text books, and eight chapters dealing with orthodontic microimplants. He has founded Dentos Limited in collaboration with his colleagues. He has spoken in world renowned orthodontic meetings as keynote speaker and provided 2 or 3 days microimplants training courses internationally.

He is doing research concerning clinical use of microimplants, their biomechanics, and animal experiments to improve microimplants.

---

### **New Horizons in Orthodontic Treatment with Microimplants**

There have been many approaches to reinforce anchorage, in other words, to minimize adverse side effects at the reactive anchorage parts when we use dental units as anchorage. With the advent of the skeletal anchorage, the concept of absolute anchorage could be accepted and realized.

Among them, tiny microimplants can provide much more versatility by placing them not only below the root but between roots, thanks to their small size. By placing them between roots, it has become easier to apply horizontal force to the teeth to move them anteroposteriorly.

The distal retraction of anterior teeth and/or the posterior teeth is now a routine practice. Most important change after the microimplants is the possibility of intrusion of molars or incisors or full dentition. Clinicians can intrude molars and incisors easily with the microimplants, and this could substitute orthognathic surgery in some particular cases.

Speaker will discuss the treatment mechanics for bialveolar protrusion, openbite, whole dentition retraction, deepbite, and other minor tooth movements for preprosthetic orthodontic treatment.

## SCIENTIFIC PROGRAMME

### Bone Anchorage and Adjunctive Surgery in Orthodontics

#### Keynote Lecturer



**Dr. Dieter Drescher**

Prof. Dr. Dieter Drescher was born in 1958. He studied dentistry between 1977 and 1982 at the University of Bonn. He received postgraduate course in orthodontics from 1984 to 1988. He joined University of Düsseldorf in 1996. He became professor and head of the Department of Orthodontics at the University of Düsseldorf in 1997. He is Executive Director of the Center of Dentistry at the University of Düsseldorf since 2002.

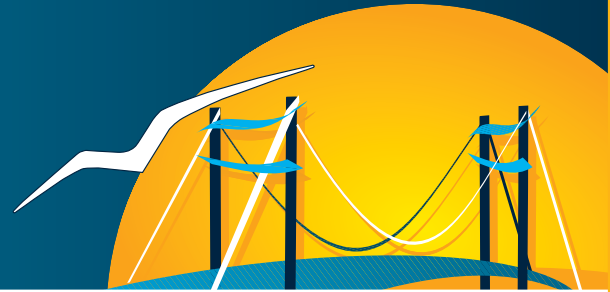
---

### Orthodontic and Orthopaedic Application of Next-Generation Mini-implants

Mini-implants have become very popular due to their versatility, minimal invasiveness, and cost effectiveness. The alveolar process is currently the most preferred insertion site. However, due to the varying bone quality, survival rates of implants inserted in the alveolar ridge still need improvement. Other regions, such as the anterior palate, provide much better conditions for mini-implant insertion, since the amount and quality of the available bone is far superior.

In order to utilize mini-implants inserted in the anterior palate, a new generation of mini-implants with interchangeable abutments was developed. Employing different types of abutments and connectors new solutions for a great variety of treatment tasks are now available. This includes orthodontic tasks such as molar distalisation and mesialisation, molar intrusion and extrusion, asymmetric space closure, anchorage of anterior and lateral dental segments, or molar uprighting. On the other hand, skeletal treatment tasks such as rapid maxillary expansion in combination with maxillary protraction and control of mandibular growth are now entering routine clinical routine.

The presentation will outline the indication and application of the new generation of mini-implants and will present a perspective of future development of skeletal anchorage.



## SCIENTIFIC PROGRAMME

### **Bone Anchorage and Adjunctive Surgery in Orthodontics**

#### **Keynote Lecturer**



**Dr. Serge Dibart**

Serge Dibart, DMD is Professor and Director of Graduate Program of Periodontology and Oral Biology at Boston University Henry M. Goldman School of Dental Medicine. He is a graduate of Tufts and Boston Universities, diplomate of American Board of Periodontology and the author of multiple scientific peer-reviewed articles and several books on periodontology and implant dentistry (Wiley-Blackwell publishing). He has private practice limited to periodontal plastic surgery and implant dentistry in Watertown MA (USA).

---

### **Piezocision: Updates and New Applications**

One of the biggest challenges of adult orthodontics today is the time the patient must spend in brackets. Piezocision is a novel, minimally invasive surgical procedure that can reduce that time by half while correcting hard and soft tissue deficiencies concurrently. This minimally invasive technique constitute a powerful tool in the armamentarium of the 21st century dental team.

## SCIENTIFIC PROGRAMME

### Contemporary Dentofacial Treatment Modalities

#### Keynote Lecturer

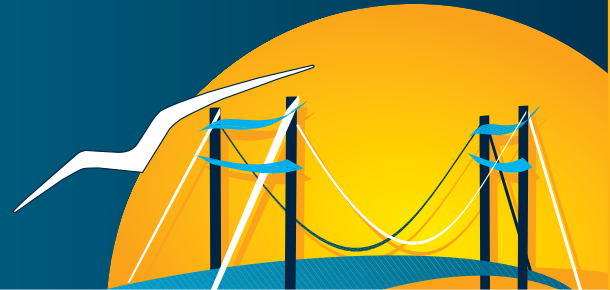


**Dr. Nazan Küçükkeleş**

Nazan Küçükkeleş completed her dental education in University of Istanbul. She has completed her PhD between 1984-1989 in Orthodontic Department of Marmara University where she became a professor and the vice dean in year 2002. She has been the chairman of the Orthodontic Department of Marmara University between 2006 and 2010. She has over 60 publications and 80 presentations and has given theoretical and practical courses in different countries. Her academic interests are; orthognathic surgery, maxillary protraction, mini screws and lingual technique. She is married and has a son.

#### Rapid Maxillary Protraction with Surgery Assistance

Using face mask is a common treatment protocol for the correction of maxillary retrognathism. It is possible to advance the maxilla in growing individuals, about 2-3 mm in 9-12 months of treatment time. But we don't have many options other than surgery or distraction if the growth is completed or the anomaly is more severe. Waiting for the growth completion for surgical option may result in psychological problems in the adolescence period. It is also possible to elongate membraneous bone of the maxilla with distraction osteogenesis which is performed usually in cleft cases. On the other hand few researchers documented the clinical and cephalometric results of a 'distraction like' method. They protracted maxilla rapidly by using face mask following Le Fort I surgery. These studies reported 5-11 mm maxillary advancement in a very short period of time. In 2004, we designed a study to evaluate the effects of a similar treatment method and compared it with the conventional one (RPE+face mask therapy). The results of surgery assisted protraction was more remarkable and rapid compared to the other group. After these promising results we decided to improve the technique by preparing an intraoral design in which maxilla was protracted with Class III elastics attached between an upper splint and the mini plates located on the symphyseal bone. We treated a group of patients with this latter design and also evaluated the results of this treatment method. During this lecture short and long term progress of cases treated with both protocols will be presented together with the results of both studies.



## SCIENTIFIC PROGRAMME

### Contemporary Dentofacial Treatment Modalities

#### Keynote Lecturer



**Dr. Marco Rosa**

Marco Rosa graduated as Medical Doctor in 1981 then carried out postgraduate studies first in Dentistry, then in Orthodontics.

He is an Active Member of the Angle Society of Europe and a Diplomat of both the European Board and the Italian Board of Orthodontics.

He works in private practice, limited to Orthodontics, in Trento, Northern Italy and he is involved in the teaching program at Insubria University in Varese - Italy.

His primary areas of interest are "Early Treatment in Mixed Dentition: why and how to correct malocclusion without touching permanent teeth", "Missing Upper Lateral Incisors: Space Closure vs Implants" and "Interdisciplinary Treatment in the Adult Patient".

He published and regularly lectures internationally about these topics.

### A New Method for Treatment in the Mixed Dentition: Why, How and When to Correct Some Malocclusions without Touching Permanent Teeth

The aim of this lecture is to present and describe a new method of early treatment.

In the mixed dentition, satisfactory results can be achieved by working with fixed appliances on the deciduous teeth, instead of on permanents. Deciduous teeth can support fixed appliances, as well as orthodontic and orthopaedic forces. As a result permanent molars and incisors, spontaneously move and self-correct even if they have already erupted.

The major advantages of this method are:

#### Prevention:

- No risk of iatrogenic side effects on untouched permanent teeth.
- Prevention of the possible side effects of a long treatment with fixed appliances bonded on permanent teeth (the eventual second phase of treatment is significantly shorter than a comprehensive treatment).

#### Effectiveness:

- Better orthodontic movement of permanent teeth (no dento-alveolar compensation of permanent molars and incisors).
- Predictable results, also due to the minimum (or no) compliance asked to the patient.

#### Efficiency:

- Improved cost-benefit ratio.
- No sophisticated biomechanics: permanent teeth self-correct.
- Minimum chair-side working-time.
- Minimum or unnecessary second phase treatment.

Clinical results and scientific data will be presented in order to demonstrate that this clinical method can be used not only for the classical indications of early treatment (cross-bites, functional shifts, transverse discrepancies), but also in many class I, class II and class III malocclusions.

Contraindications and limitations of this new treatment philosophy will also be outlined and discussed.

## SCIENTIFIC PROGRAMME

### Free Topics

#### Keynote Lecturer



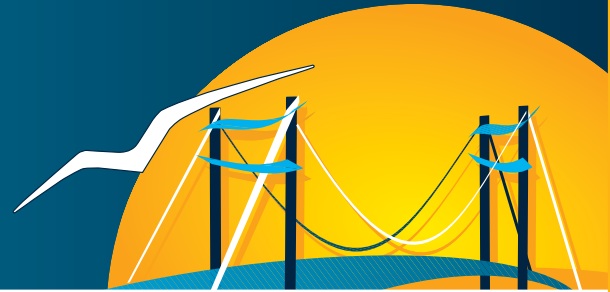
**Dr. Serdar Üşümez**

Dr. Uşümez is a 1996 graduate of Hacettepe University, Ankara, Turkey. He completed his orthodontic training in 2000 in Selçuk University, Konya, Turkey and worked as full time teacher at Selçuk and Marmara Universities. He is currently the head of orthodontic department in University of Gaziantep, Gaziantep, Turkey. His main research interests are bonding in orthodontics and development of orthodontic healthcare services. He has published more than 60 papers mostly international.

---

#### Recent Advances in Orthodontic Bonding

This lecture covers the advances in bonding and adhesion of orthodontic attachments and provide an up-to-date overview of the new adhesives. Bonding to substrates such as porcelain, composite and amalgam will be addressed and allergenicity and safety of various orthodontic adhesive monomers will also be discussed.



## SCIENTIFIC PROGRAMME

### Pre-Congress Course



**Dr. Albino Triaca**

#### Distraction Procedures in Orthodontics

The aim of decompensation is the correct placement of the teeth on the basal mandibular / maxillary bone. The amount of orthodontic decompensation possible is limited with the skeletal basal bone anatomy. Furthermore the basal bone cannot be influenced by orthodontic means. The resulting occlusal deficit can often be corrected by rotation of the basal bone. However, here also there are limits. Too great a mandibular anterior rotation is associated with a high relapse rate and too great a posterior rotation can result in an unaesthetic loss of mandibular contour.

Alveolar process distraction solves these problems in that relief of dental crowding and desired dentoalveolar positioning can be achieved independent of the skeletal basal bone. A pleasing mandibular body contour can be retained or achieved using the mandibular body sagittal osteotomy (winged osteotomy).

The aim of this course is the illustration and technique of front segment distraction and the (winged osteotomy). The second part of the course illustrates, step by step, the surgical planning involved in the use of the new techniques of front segment distraction and the (winged osteotomy).

### Postgraduate Course



**Dr. Hyo-Sang Park**

#### Micro-Implant Anchorage (Mia) for Orthodontic Treatment

##### A description of course contents

The MIA course will cover the topics below:

Brief introduction and history, surgical consideration and procedure, biomechanics concerning MIA sliding mechanics and case presentation (skeletal Class II malocclusion treatment, skeletal Class I bialveolar protrusion), various applications (molar intrusion, molar distalization, distalization of whole dentition, molar protraction, solving the Class II or Class III keys, correcting midline deviation, asymmetric tooth movement), success and failure of micro-implant and clinical management.

##### Objectives of the MIA course

The participants understand the efficacy and effectiveness of the microscrew implants as orthodontic anchorage and improve capability of treatment planning for various clinical situations. Regarding placement of micro-implants, the participants communicate with oral surgeon or periodontists or can place those by themselves.

## SCIENTIFIC PROGRAMME

### Contents of Lecture

1. Introduction and history
2. Surgical consideration and procedure
  - Maxillary buccal area
  - Maxillary palatal area
  - Maxillary anterior teeth area
  - Mandibular posterior teeth area
  - Retromolar area
3. MIA (Micro-implant anchorage) sliding mechanics
4. Treatment procedure and case presentation
  - Skeletal Class II malocclusion treatment
  - Skeletal Class I bialveolar protrusion and treatment effects
  - Skeletal Class III malocclusion treatment
  - Openbite treatment and relapse
  - Deepbite management
5. Clinical management of microimplants

### Post-Congress Course



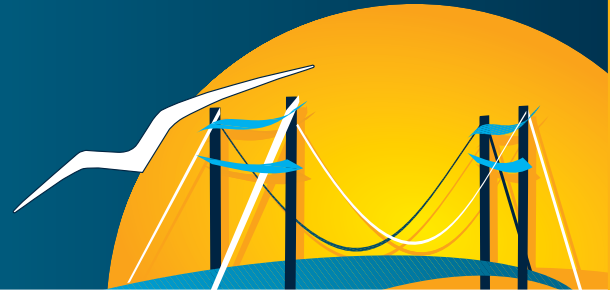
**Dr. Jeff Okeson**

### Maintaining a Healthy Functioning Masticatory System Through Orthodontic Therapy

Orthodontic therapy routinely changes the patient's occlusal condition and this can significantly modify masticatory function. It is important that the goals of orthodontic therapy include the development of a sound relationship between the new occlusal position and the functional position of the temporomandibular joints. This presentation will discuss important functional features of the temporomandibular joints and their relationship to the occlusal position. Treatment goals for the development of orthopedic stability will be presented so as to minimize masticatory dysfunctions, such as temporomandibular disorders. The relationship between TMD and orthodontic therapy will be discussed and a simple TMD screening evaluation prior to orthodontic therapy will be presented. This course will also provide an update on current thoughts regarding the etiology and management of common TM Disorders.

#### You will learn:

- Which TMD patients benefit from orthodontic therapy and which do not?
- When should orthodontic therapy be initiated for TMD?
- What are the functional orthopedic treatment goals for orthodontic therapy?
- Does orthodontic therapy cause TMD?
- Does orthodontic therapy prevent TMD?
- How should you screen your patients for TMD before beginning therapy?
- If TMD symptoms begin during orthodontic therapy, what should you do?



## SCIENTIFIC PROGRAMME

### Call for abstracts

The Scientific Committee invites authors to submit abstracts for selection and inclusion in the Scientific Programme. All abstracts must be written in English and in the required format. Please find below the instructions for abstract layout and submission:

- Authors are invited to submit abstracts for oral or poster presentations.
- Abstract should focus on one of the congress topics:
  - Contemporary Dentofacial Treatment Modalities
  - 3D Imaging
  - Bone Anchorage and Adjunctive Surgery in Orthodontics
  - TMJ from Different Perspectives
  - Free Topics
- Abstracts containing no more than 2000 characters (app. 300 words) including spaces, must be written in English. The abstract text should be structured into the following format:
  - **Objectives (Aims)** An introductory sentence indicating the objective and purpose of the study.
  - **Materials (or Subjects) and Methods** A description of experimental procedures including applicable statistical evaluation.
  - **Results** A summary of the data and results (a statement such as "the result will be discussed" is not acceptable!)
  - **Conclusions** A statement of the study's conclusion.
- Figures, tables and illustrations may not be included in abstracts.
- Abstracts can be submitted only via the congress web site: [www.eos2011.com](http://www.eos2011.com) where detailed submission guidelines can be found.

Each participant may submit up to two abstracts as a presenting author. After a successfully completed submission, an acknowledgement of receipt of the abstract, together with an access key for editing the abstract during the 72 hours following the submission will be sent to the author's e-mail address. All submissions will be reviewed before inclusion in the programme.

The organisers will publish only the abstracts submitted by the authors who have paid their registration fees in full by **1 April 2011**.

The deadline for submission of abstracts is **1 December 2010**.

Abstracts received after this date cannot be considered for evaluation.

Notification of acceptance of abstracts will be sent by e-mail to the corresponding author by **4 March 2011**.



## SCIENTIFIC PROGRAMME

### Instructions for Authors

#### Registration of Presenting Author

All presenting authors must register for the Congress by 1 April 2011, the latest, and pay the appropriate delegate fees.

#### Publication of Abstracts

Accepted oral and scientific poster abstracts will be published on the website of the **European Journal of Orthodontics** and in the Congress Abstract book, which will be included in the Congress documents.

#### Instructions for Oral Presentations

The scheduled time for each oral presentations is 10 minutes. With this in mind, speakers are requested to stay within the given time. While a maximum of five names may be given as authors in any one presentation, only one author will be allowed to give the oral presentation.

#### Instructions for Poster Presentations

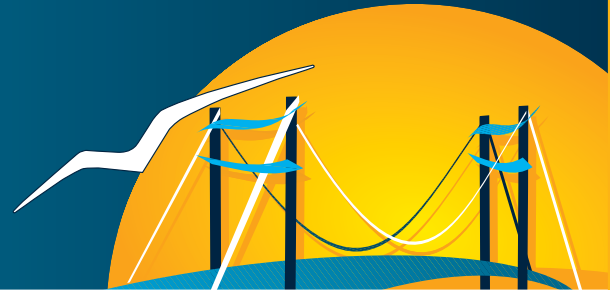
All posters will be numbered, listed and grouped in accordance with the congress topics. Posters will be classified as scientific or clinical, according to the content. Authors must be present in the poster area to discuss their poster at the scheduled time.

Poster format: 75 cm (width) x 100 cm (height)

Detailed instructions for oral and poster presentations will be posted and arranged through the official EOS 2011 website [www.eos2011.com](http://www.eos2011.com).

#### Important Notice

Authors failing to present their accepted presentation at the 2011 congress, will not be accredited to present any study (either poster or oral) at the 2012 EOS Congress in Spain.



## AWARDS

### **EOS Poster Awards**

Three awards each with the value of £ 500 (app. € 750), together with an inscribed certificate, are available for the three posters presented at the annual Congress on any topic displaying the best information, presentation and research.

Please note that these three poster awards are open also to non-members of the Society.

### **WJB Houston Poster Awards**

The Awards are given in memory of Professor WJB Houston who was an Honorary Editor, Past President and Secretary of the European Orthodontic Society. Every year, the interest from a trust, incorporating some of the Society's reserves, is available to finance two awards, one for the best research paper and the other for the best poster, presenting the results of original, unpublished research, of a topic of orthodontic interest at the annual Congress. The winners will be given a certificate and a prize of £1000 (app. € 1.500).

Papers and posters under combined authorship are eligible provided that the senior author gives written confirmation that the work is mainly that of the junior author. Papers and posters must be presented personally, in English, by the first named author who must be a member of the Society, under the age of 35 years, and who must have registered for the Congress and paid the registration fee in full. The applicants for the research awards shall indicate their desire to enter for the award on the abstract form for the next Congress indicating whether it is to be considered for the lecture or the poster award. They shall submit, by e-mail, with the abstract, a paper, double-spaced of not more than 10 pages of A4 including the references, on the research project. Tables and figures in addition to the main paper should be kept to a minimum.

Reports from independent expert referees may be obtained and made available to the Scientific Committee who will then indicate to the applicant whether it has been accepted for a poster or a lecture session. The decision of the Committee will be final. The prizes will be judged by two panels of three judges. One panel consisting of the Immediate Past President, a member of the Executive Committee and another member of the Council will judge the prize for the best paper. The second panel will judge the prize for the best poster and will consist of the Honorary Editor, the Chairman of the Scientific Committee and one ordinary member involved in orthodontic teaching. The panels of judges will be appointed by the Council and a report will be given to the Council meeting. The prizes shall be judged as soon as possible and the recipients of the awards informed by the President who will report the decisions to Council.

The Society reserves the right to withdraw or withhold funds from the WJB Houston Award dependent on the resources available and may modify the amount of the award. The Award Committees may withhold the award should the submissions be considered to be inadequate. The decisions of the Committees will be final.

### **EOS Research Grants**

The European Orthodontic Society is pleased to announce that sums normally between £ 5.000 and £ 20.000 (app. € 7.400 and € 25.265) are now available to members for research. Further information can be obtained from:

European Orthodontic Society

Flat 20, 49 Hallam Street, London W1W 6JN

Tel: +44 (0) 20 7637 0367 • Fax: +44 (0) 20 7323 0410 • E-mail: eoslondon@aol.com

The closing date for applications is **31 December 2010**.



# EOS 2011 ISTANBUL

## PROGRAMME OUTLINE

### Saturday, 18 June

08:00-18:00	European Board Examination	ICEC Main Building
12:00-18:00	EFOSA Council Meeting	ICEC Main Building

### Sunday, 19 June

08:00-20:00	Registration	ICEC Main Building
08:00-18:00	European Board Examination	ICEC Main Building
08:30-16:30	Pre-Congress Course	
08:30-16:30	Postgraduate Course	
09:00-15:30	EFOSA General Assembly Meeting	
09:00-13:30	European Orthodontic Teachers' Forum	
12:00-15:00	EOS Opening Council Meeting	
17:00-17:15	Opening Ceremony	Anadolu Auditorium
17:15-18:00	Sheldon Friel Memorial Lecture	
18:00-18:30	Houston Research Award Lectures	
18:30-19:15	Performance	
19:15-22:00	Get-Together Cocktail & Opening of Trade Exhibition	Rumeli Hall

### Monday, 20 June

08:00-19:00	Registration	
08:00-18:00	Trade Exhibition	Rumeli Hall
08:00-18:00	EBO Case Display	
08:30-17:30	Scientific Sessions	
12:30-13:30	EBO Case Presentation	
19:00-24:00	President's Reception	Çırağan Palace Kempinsky

### Tuesday, 21 June

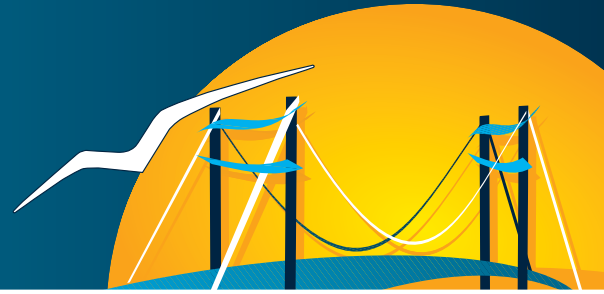
08:00-19:00	Registration	
08:00-18:00	Trade Exhibition	
08:00-18:00	EBO Case Display	
08:30-18:30	Scientific Sessions	
12:30-13:30	EBO Case Presentation	
15:30-18:00	Poster Session	
21:00-04:00	Postgraduate Disco Party	Portaxe

### Wednesday, 22 June

08:00-19:00	Registration	
08:00-18:00	Trade Exhibition	
08:30-17:30	Scientific Sessions	
09:00-18:00	Forestadent Golf Tournament	
12:30-13:30	EBO Case Presentation	
12:30-14:00	EOS Closing Council Meeting	
14:00-14:10	Announcement of Award Winners and New EBO Diplomates	
17:30-18:30	EOS Business Meeting	
20:00-24:00	Gala Dinner	The 1001 Column Cistern

### Thursday, 23 June

09:00-17:00	Post-Congress Course	Hilton Hotel
09:00-17:00	Congress Outing and Silver Mill Competition	Topkapı Palace



## PROGRAMME AT-A-GLANCE

	7:00	7:30	8:00	8:30	9:00	9:30	10:00	10:30	11:00	11:30	12:00	12:30	13:00	13:30	14:00	14:30	15:00	15:30	16:00	16:30	17:00	17:30	18:00	18:30	19:00	19:30	20:00	20:30	21:00	21:30		
<b>Saturday 18 June</b>			European Board Examination (08:00-18:00)	EFOSA Council Meeting (12:00-18:00)																												
<b>Sunday 19 June</b>			Registration (08:00-20:00)	European Board Examination (08:00-18:00)	Pre-Congress Course (08:30-16:30)	Pre-Congress Course (08:30-16:30)	EFOSA General Assembly Meeting (09:00-15:30)	European Orthodontic Teachers' Forum (09:00-13:30)	EFOSA Council Meeting (12:00-15:00)	Opening Ceremony (17:00-17:15)	Sheldon Friel Memorial Lecture (17:15-18:00)	Houston Research Award Lectures (18:00-18:30)	Get-Together Cocktail and Opening of Trade Exhibition (19:00-22:00)																			
<b>Monday 20 June</b>			Registration (08:00-19:00)	Trade Exhibition (08:00-18:00)	EBO Case Display (08:00-18:00)	Scientific Sessions (08:30-17:30)	EBO Case Presentation (12:30-13:30)																									
<b>Tuesday 21 June</b>			Registration (08:00-19:00)	Trade Exhibition (08:00-18:00)	EBO Case Display (08:00-18:00)	Scientific Sessions (08:30-17:30)	EBO Case Presentation (12:30-13:30)	Poster Session (15:30-18:00)																								
<b>Wednesday 22 June</b>			Registration (08:00-19:00)	Trade Exhibition (08:00-18:00)	Scientific Sessions (08:30-17:30)	Forerunner Gold Tournament (09:00-18:00)	EBO Case Presentation (12:30-13:30)	EOS Closing Council Meeting (12:30-14:00)																								
<b>Thursday 23 June</b>			Post-Congress Course (09:00-17:00)	Congress Outing and Silver Mill Competition (09:00-17:00)	Announcement Of Award Winners and New EBO Diplomates (14:00-14:10)	EOS Business Meeting (17:30-18:30)																										

## SOCIAL EVENTS

### Opening Ceremony & Get-Together Cocktail, Opening of Exhibition

**Date** Sunday, 19 June  
**Venue** Istanbul Convention & Exhibition Centre (ICEC)  
**Dress Code** Business Casual



### President's Reception

**Date** Monday, 20 June  
**Venue** Çırağan Palace Kempinsky  
**Dress Code** Smart Casual

The Çırağan Palace once the residence of the last Ottoman emperors, has been restored to its former glory and is one of the luxury Kempinsky hotels on the European shore of the Bosphorus. The Sultan's Palace was built in wood at the end of the 16th century and then rebuilt in 1857, and renovated in 1986.

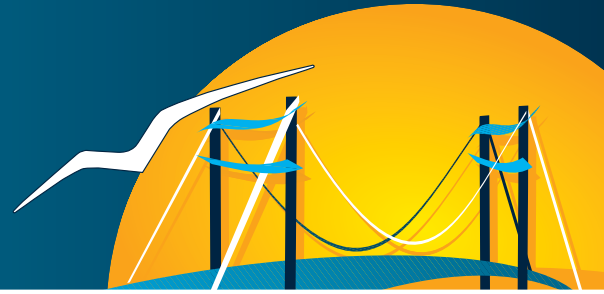


### Postgraduate Disco Night

**Date** Tuesday, 21 June  
**Venue** Portaxe  
**Dress Code** Casual

Located right on the European shore of the Bosphorus, Portaxe is a premium night club in Istanbul. Guests of the disco party will enjoy the Bosphorus breeze, accompanied by the music of the best DJs of Turkey.





## SOCIAL EVENTS

### **Gala Dinner**

**Date** Wednesday, 22 June  
**Venue** The 1001 Column Cistern  
**Dress Code** Lounge Suite

Built in the 4<sup>th</sup> Century AD the 1001 Column Cistern is unique for a social event in Istanbul. Located right under the Byzantine Hippodrome, the 1001 Column Cistern has been renovated in 2000s as a venue for special events.



### **Congress Outing and Silver Mill Competition**

**Date** Thursday, 23 June  
**Venue** Topkapı Palace

The legendary Topkapı Palace Museum in Istanbul is a jewel among monuments crowning world cultural heritage. Its location bordering the Byzantine hippodrome, with a view of the Bosphorus is as spectacular as the historical collections it houses. The Palace is an architectural marvel blending ages with styles in a labyrinth of oriental gardens. The Museum offers endless surprises with seasonal exhibitions and world-class events. A programme of guided tours of the Palace and its pavillions is an unforgettable event and a specialty for the Congress outing day. Delegates of the 87<sup>th</sup> EOS Congress are cordially invited to visit the Palace, the Harem, the Treasury - and encouraged to join the real treasure hunt in the Palace gardens as the Sultans of the day !

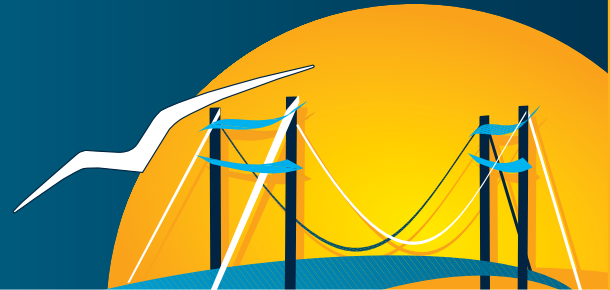


## TOURS

### GENERAL INFORMATION ON DAILY CITY TOURS

- All tours will be conducted by English-speaking professional guides.
- Visiting museums and transfers by air-conditioned coaches are inclusive.
- Full-Day City Tours include lunch.
- Please note that beverages are not included.
- Reservation for all tours can only be guaranteed if bookings are made and paid for 16 May 2011.
- Cancellation made before 16 May 2011 will be refunded 50%. No refunds after this date.





## TOURS

### Daily Tours

**Tour 1 / Istanbul Old City Tour / Full Day / Fee: € 90 (Lunch included)**

**Date** Monday, 20 June  
**Departure from** Congress Venue (09:00)  
**Arrival** 17:00

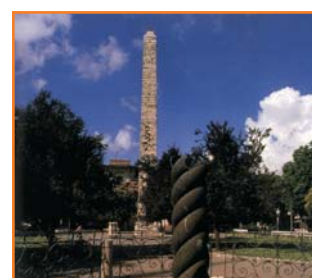
**Hippodrome:** The former centre of sports and political activities of historical Constantinople where the famous Serpentine Column from Delphi is conserved.

**Blue Mosque:** Famous for its blue tiles and six minarets; one of the largest mosques in Istanbul dating from the 17th century; and one of the main adornments in the skyline of the historical city.

**Topkapi Palace Museum:** The former imperial residence known as 'The house of Felicity' from where the Ottoman Empire was ruled. Today an attractive museum that houses one of the largest collections of medieval oriental arts, including Chinese and Japanese porcelain and the Ottoman treasury.

**Basilica Cistern:** Located at the Hippodrome, the Basilica Cistern was built in the 6th century. It is the largest and most impressive of the Byzantine cisterns, in Istanbul.

**Grand Covered Bazaar:** In addition to its historical importance 'Kapalı Çarşı' is a bazaar that will tempt even the non-shoppers with its rich collection of precious handmade carpets, jewellery, leather and souvenirs



**Tour 2 / Spice Bazaar & Bosphorus by Cruise / Full Day / Fee: € 70 (Lunch included)**

**Date** Monday, 20 June  
**Departure from** Congress Venue (09:00)  
**Arrival** 17:00

**Spice Bazaar:** Built in 16th century, Spice Bazaar was the shopping mall of its era with the main product scope of spices imported from the East. World-famous with the ambient oriental scent, the place is the correct spot to buy Turkish Delight, apple tea, safran, red & hot pepper and pistachios today.

**Bosphorus by Cruise:** Departing from the main pier at the old city, Bosphorus by cruise allows to discover Istanbul with a particular point of view, as floating on the Bosphorus. Travelling from one continent (Europe) to another (Asia) in 20 minutes without passing any borders is only possible in Istanbul, as one-of-a-kind experience.



## TOURS

### Tour 3 / The Golden Horn Tour / Half Day / Fee: € 55

**Date** Monday, 20 June  
**Departure from** Congress Venue (13:30)  
**Arrival** 17:00

**Rahmi Koc Museum:** The Rahmi Koç Museum is the first major museum in Turkey dedicated to the history of transport, technology and communications. Housed in magnificent buildings - themselves prime examples of industrial archaeology - on the shore of the historic Golden Horn, the collection contains thousands of items from gramophone needles to full size ships and aircraft.

**Chora Church:** The Church of St. Savior in Chora is considered to be one of the most beautiful examples of a Byzantine architecture. The church is situated in the western, Edirnekapi district of Istanbul. In the 16th century, the church was converted into a mosque by the Ottoman rulers, and again into a museum in 1948. The interior of the building is covered with fine breath taking, mosaics and frescoes.

**Pierre Loti Cafe:** Pierre Loti (pseudonym of Julien Viaud), was a French novelist and naval officer, very well known with his novels *Aziyade* (1879), *Mon Frère Yves* (1883) and many more. The café, a very old wooden house, was the residence of the novelist and has marvellous Golden Horn panorama. Cable car drive to Cafe Pierre Loti enjoying the panoramic view of the Golden Horn.



### Tour 4 / The Golden Horn Tour / Full Day / Fee: € 85 (Lunch included)

**Date** Tuesday, 21 June  
**Departure from** Congress Venue (09:00)  
**Arrival** 17:00

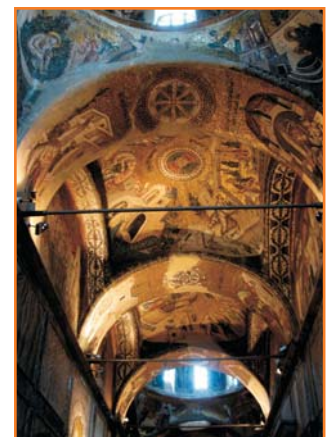
**Miniaturk:** The only miniature park in Turkey, and one of the 11 miniature parks in the world accommodation 1/25 models of famous buildings, temples and places from the Turkish and Ottoman era.

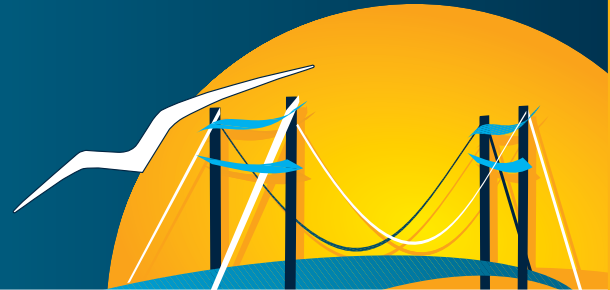
**Rahmi Koc Museum:** The Rahmi Koç Museum is the first major museum in Turkey dedicated to the history of transport, technology and communications. Housed in magnificent buildings - themselves prime examples of industrial archaeology - on the shore of the historic Golden Horn, the collection contains thousands of items from gramophone needles to full size ships and aircraft.

**Chora Church:** The Church of St. Savior in Chora is considered to be one of the most beautiful examples of a Byzantine architecture. The church is situated in the western, Edirnekapi district of Istanbul. In the 16th century, the church was converted into a mosque by the Ottoman rulers, and again into a museum in 1948. The interior of the building is covered with fine breath taking, mosaics and frescoes.

**Pierre Loti Cafe:** Pierre Loti (pseudonym of Julien Viaud), was a French novelist and naval officer, very well known with his novels *Aziyade* (1879), *Mon Frère Yves* (1883) and many more. The café, a very old wooden house, was the residence of the novelist and has marvellous Golden Horn panorama. Cable car drive to Cafe Pierre Loti enjoying the panoramic view of the Golden Horn.

**Eyup Sultan:** The mausoleum of Eyup Sultan, a close follower of Mohammad the Prophet, is the main religious center of Istanbul with its serene atmosphere.





## TOURS

### Tour 5 / The Old Istanbul Tour / Full Day / Fee: € 90 (Lunch included)

**Date** Tuesday, 21 June  
**Departure from** Congress Venue (09:00)  
**Arrival** 17:00

**Hippodrome:** The former centre of sports and political activities of historical Constantinople where the famous Serpentine Column from Delphi is conserved.

**Blue Mosque:** Famous for its blue tiles and six minarets; one of the largest mosques in Istanbul dating from the 17th century; and one of the main adornments in the skyline of the historical city.

**Hagia Sophia Museum:** Hagia Sophia is a former Orthodox patriarchal basilica, later a mosque and now a museum. From the date of its dedication in 360 until 1453, it served as the cathedral of Constantinople, except between 1204 and 1261, when it was the cathedral of the Latin empire. The building was a mosque from 29 May 1453 until 1934, when it was refashioned into a museum.

**Istanbul Archeological Museum:** The museum was founded by decree as the Imperial Museum, in 1891. Since the imperial decree protecting cultural goods in the Ottoman empire was enforced, many governors from the different provinces would send in found artefacts to the capital. In that way the museum was able to amass a great collection. Upon its 100th anniversary in 1991, the Museum received the European Council Museum Award. The ornate Alexander Sarcophagus, is among the most famous pieces of ancient art in the museum. The Kadesh Peace Treaty (1258 BCE), signed between Ramesses II of Egypt and Hattusili III of the Hittite Empire, is another favourite of the visitors. It is the oldest known peace treaty in the world, and a giant poster of this tablet (treaty) adorns the wall of the United Nations Headquarters in New York City.

**Basilica Cistern:** Located at the Hippodrome, the Basilica Cistern was built in the 6th century. It is the largest and most impressive of the Byzantine cisterns, in Istanbul.

**Grand Covered Bazaar:** In addition to its historical importance 'Kapali Çarşı' is a bazaar that will tempt even the non-shoppers with its rich collection of precious handmade carpets, jewellery, leather and souvenirs.



### Tour 6 / A Unique Opportunity in Istanbul: Hamam (Turkish Bath) Experience at Cemberlitas Hamami & Grand Bazaar / Half-Day / Fee: € 120

**Date** Tuesday, 21 June  
**Departure from** Congress Venue (13:00)  
**Arrival** 17:00

**Turkish Bath:** Hamam is the public Turkish bath, with a history from ancient Roman and Persian cultures to today (similar to Finnish sauna as the wet version). Hamam was the personal cleansing center of the citizens during the Ottoman era, which today is a cultural heritage as well.

A person taking a Turkish bath first relaxes in a room (known as the warm room) that is heated by a continuous flow of hot, dry air allowing the bather to perspire freely. Bathers may then move to an even hotter room (known as the hot room) before splashing themselves with cold water. After performing a full body wash and receiving a massage, bathers finally retire to the cooling-room for a period of relaxation.

#### Hints:

- Due to strict concerns of hygiene, bathers are not allowed to wear swimsuits at Turkish baths. Instead, they are provided a deeply cleansed cotton cloths, to wrap around the body. Please do follow the instructions of your guide will provide.
- Due to concerns of privacy, ladies and gentlemen generally receive service and enjoy Turkish bath at separate chambers.

Built in 1584, Cemberlitas Hamami is one of the masterpieces of Sinan, the great master architect of the Ottoman Empire. The building itself, is a present of Nurbanu Sultan (mother of Emperor Ahmed III) to the local citizens.

**Grand Covered Bazaar:** The Grand Covered Bazaar is one of the largest and oldest covered markets in the world, with more than 58 covered streets and over 1200 shops which attract visitors by the hundred thousands, daily. Opened in 1461, it is well known for its jewelry, pottery, spice, and carpet shops.



## TOURS

### Tour 7 / Dolmabahce Palace Museum & Lunch Cruise on Bosphorus & Spice Market / Full Day / Fee: € 90 (Lunch included)

**Date** Wednesday, 22 June  
**Departure from** Congress Venue (08:30)  
**Arrival** 15:00

**Dolmabahce Palace Museum:** Residing on the shore of the Bosphorus, the Dolmabahce Palace was the last imperial palace of the Ottoman's. Built between the years 1843 and 1856 and costed five million Ottoman gold liras, the equivalent of 35 tonnes of gold. Fourteen tonnes of gold in the form of gold leaf were used to gild the ceilings of the 45.000 sqm monoblock palace, which stands on an area of 110,000 sqm.

Inherited by the Republic of Turkey in 1924, the palace accommodates the world's largest Bohemian crystal chandelier is in the center hall. The chandelier, a gift from Queen Victoria, has 750 lamps and weighs 4.5 tonnes. Dolmabahçe has the largest collection of Bohemian and Baccarat crystal chandeliers in the world, and one of the great staircases has bannisters of Baccarat crystal.

**Lunch Cruise on the Bosphorus:** A lunch cruise on the Bosphorus will allow the guests to enjoy the Bosphorus breeze and local food onboard, whilst discovering the city from another point of view.

**Spice Bazaar:** Built in 16th century, Spice Bazaar was the shopping mall of its era with the main product scope of spices imported from the East. World-famous with the ambient oriental scent, the place is the correct spot to buy Turkish Delight, apple tea, safran, red & hot pepper and pistacchios today.



### Tour 8 / Istanbul, Roman and Ottoman / Half-Day / Fee: € 60

**Date** Wednesday, 22 June  
**Departure from** Congress Venue (13:00)  
**Arrival** 17:00

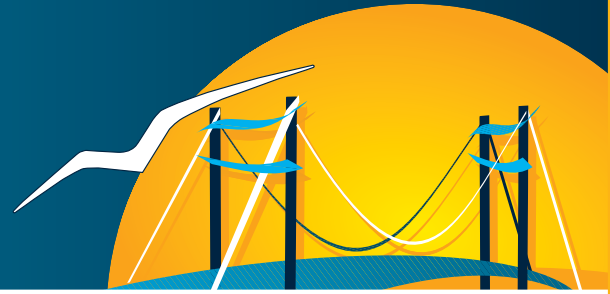
**Hippodrome:** The former centre of sports and political activities of historical Constantinople where the famous Serpentine Column from Delphi is conserved.

**Blue Mosque:** Famous for its blue tiles and six minarets; one of the largest mosques in Istanbul dating from the 17th century; and one of the main adornments in the skyline of the historical city.

**Hagia Sophia Museum:** Hagia Sophia is a former Orthodox patriarchal basilica, later a mosque and now a museum. From the date of its dedication in 360 until 1453, it served as the cathedral of Constantinople, except between 1204 and 1261, when it was the cathedral of the Latin empire. The building was a mosque from 29 May 1453 until 1934, when it was refashioned into a museum.

**Grand Covered Bazaar:** In addition to its historical importance 'Kapali Çarşı' is a bazaar that will tempt even the non-shoppers with its rich collection of precious handmade carpets, jewellery, leather and souvenirs.





## TOURS

### Tour 9 / A Unique Opportunity in Istanbul: Hamam (Turkish Bath) Experience at Galatasaray Hamami & The Galata Tower / Half-Day / Fee: € 110

**Date** Wednesday, 22 June  
**Departure from** Congress Venue (13:00)  
**Arrival** 17:00

**Turkish Bath:** Hamam is the public Turkish bath, with a history from ancient Roman and Persian cultures to today (similar to Finnish sauna as the wet version). Hamam was the personal cleansing center of the citizens during the Ottoman era, which today is a cultural heritage as well.

A person taking a Turkish bath first relaxes in a room (known as the warm room) that is heated by a continuous flow of hot, dry air allowing the bather to perspire freely. Bathers may then move to an even hotter room (known as the hot room) before splashing themselves with cold water. After performing a full body wash and receiving a massage, bathers finally retire to the cooling-room for a period of relaxation.

#### Hints:

- Due to strict concerns of hygiene, bathers are not allowed to wear swimsuits at Turkish baths. Instead, they are provided a deeply cleansed cotton cloths, to wrap around the body. Please do follow the instructions of your guide will provide.
- Due to concerns of privacy, ladies and gentlemen generally receive service and enjoy Turkish bath at separate chambers.

Built in 1584, Cemberlitas Hamami is one of the masterpieces of Sinan, the great master architect of the Ottoman Empire. The building itself, is a present of Nurbanu Sultan (mother of Emperor Ahmed III) to the local citizens.

**The Galata Tower:** The tower was built as Christea Turris in 1348 during an expansion of the Genoese colony in Byzantium. Has been used as a watch tower, controlling the entrance of the Golden Horn, the tower is a striking landmark of Istanbul and one of the tallest buildings in the Old City, overlooking the Topkapi Palace Museum and the historical peninsula.

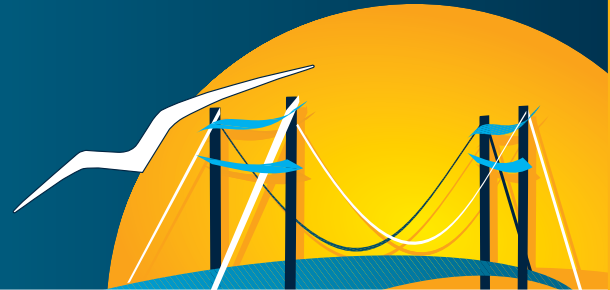


## TOURS

### GENERAL INFORMATION ON POST-CONGRESS TOURS

- All tours will be conducted by English-speaking professional guides.
- Visiting museums and transfers by air-conditioned coaches are inclusive.
- The tours include breakfast, lunch and dinner.
- Please note that beverages are not included with meals.
- Reservation for all tours can only be guaranteed if bookings are made and paid for 16 May 2011.
- Cancellation made before 16 May 2011 will be refunded 50%. No refunds after this date.





## TOURS

### Post-Congress Tour 1 /

Aegean Tour (Ephesus & Virgin Mary, Hierapolis, Pamukkale)  
2 days - 1 night / by plane

**Departure** Friday, 24 June

**Arrival** Saturday, 25 June

**Fee** € 850 / € 100 single suppl.

Friday Early morning flight to Izmir. Visit the spectacular site of Ephesus, undoubtedly the most superbly preserved Greco-Roman city in the world. The detailed walking visit includes the Odeon, Hadrian's temple, Celsus library, Agora, marble street and the theater.

Following the lunch break, you will also visit the Home of the Virgin Mary, which is widely accepted as her last residence and shrine.

Later visit the Archaeological Museum of Ephesus nearby.

Dinner and overnight in Kusadasi.

Saturday After breakfast drive to Pamukkale, wellknown for its natural thermal springs and waters with healing properties. Following a lunch break, you will visit the cascading travertines and the ancient city of Hierapolis, where the largest necropolis in Anatolia lies, with 1200 gravestones. Afternoon drive back to Izmir Airport for early evening flight to Istanbul.

\*A minimum participation of 10 person is required.



### Post-Congress Tour 2 / Dardanelles ( Gallipoli-Troy-Bursa-Iznik) / 3 days - 2 nights

**Departure** Thursday, 23 June

**Arrival** Saturday, 25 June

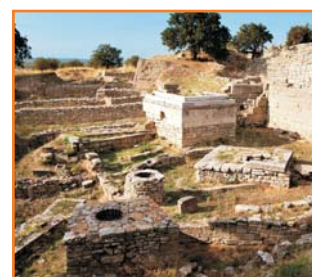
**Fee** € 600 / € 100 single suppl.

Thursday Early morning departure from your hotel to Gallipoli in order to visit the WWI battle fields, including the Lone Pine Australian Memorial, Chunuk Bair NZ Memorial, the Anzac Cove, Turkish 5th Regiment Memorial and the museum. After lunch break cruise the Dardanelles by ferry to visit the ancient city of Troy. Dinner and overnight in Canakkale.

Friday Breakfast, departure to Bursa to visit the Grand Mosque, Silk Market, Green Mosque and the Green Tomb. Bursa is the ancient capital of the Ottoman Empire and reflects the splendours of the earlier Ottoman era. Dinner and overnight in Bursa.

Saturday Breakfast and departure from Bursa to Iznik, famous for its tiles which gave the Blue Mosque in Istanbul, its name. Visit this lovely and silent town with walls, Saint Sophia which was the venue for the ecumenical council in 787 and the Green Mosque. After lunch take the ferry to cross Marmara Sea for a late afternoon return to Istanbul.

\*A minimum participation of 10 person is required.



## TOURS

### Post-Congress Tour 3 / Cappadocia / 2 days - 1 night by plane

**Departure** Friday, June 24      **Arrival** Saturday, 25 June      **Fee** € 600 / € 100 single suppl.

Friday Early flight to Cappadocia. Upon arrival and meeting with your van & driver, drive to Goreme for the visit of the Open Air Museum with well preserved churches and frescoes from the 11th - 12th centuries.

The area is a UNESCO World Heritage. Visit the huge fairy chimneys in Pasabag and the natural castle in Uchisar which looks like a Swiss cheese.

After lunch see the astonishing rock formations in Zelve and visit the local handicrafts factory. Dinner and overnight in Cappadocia.

Saturday After breakfast, visit the Camel Valley and the underground city in Kaymakli. Visit the typical potteries in Avanos. Lunch. Late in the afternoon drive to the local airport for the flight back to Istanbul.

\*A minimum participation of 10 person is required.



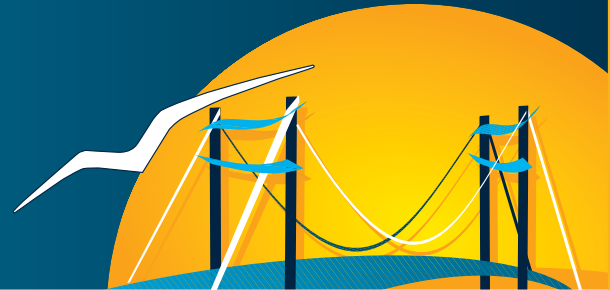
### Post-Congress Tour 4 / Blue Voyage / 7 days - 6 night by plane

**Departure** Friday, June 24      **Arrival** Thursday, 30 June      **Fee** € 750 / € 100 single suppl.

You are cordially invited to enjoy an unusual sailing pleasure on the Turkish coast of the Aegean Sea. This trip takes place on comfortable, Gulet or the locally built wooden yacht. The "Blue Voyage" takes you along the Bodrum and Gökova coasts in Southwestern to many uninhabited coves where you can swim, fish or enjoy other water sports in pristine, seas and to archaeological ruins accessible only by boat.

\*A minimum participation of 10 person is required.





## GENERAL INFORMATION

### **Registration Desk**

Registration and Information Desks will be located at the ICEC and it will be open during the congress.

### **Language**

The official congress language is English. There will be no simultaneous and/or consecutive translation.

### **Climate & Clothing**

Istanbul is mostly warm and sunny in June. The average temperature is 24-28°C during day-time. Evenings may be cooler, so it is advisable to bring some warmer clothes as well. Occasional rain showers may occur.

You may check the weather update from:  
[weather.yahoo.com](http://weather.yahoo.com) or [weather.com](http://weather.com)

### **Lunch and Refreshments**

Lunches are not included in the delegates' registration fee. However, several restaurants are located in and around ICEC congress center.

Coffee breaks are included in the participants's registration fee. Coffee and tea will be served in the Exhibition Hall Rumeli during the breaks.

### **Certificate of Attendance**

A Certificate of Attendance will be issued to each participant who registers and attends the congress and courses. Attendance to sessions is required.

### **Photographing and Video Recording**

Photographing or video recording of oral and poster presentations will not be allowed.

### **Sponsorships and Exhibition**

Sponsorship packages, exhibition space and other advertising possibilities are available for companies wishing to be part of the EOS 2011 congress. For more details and bookings please contact [exhibition@eos2011.com](mailto:exhibition@eos2011.com)

### **Liability**

By registering for the congress and/or by participating in the exhibition, participants agree that neither the organising committee nor the congress secretariat assume any responsibility for damage or injuries to persons or property during the congress. Participants and exhibitors are advised to organise their own health, travel and personal insurances.



## GENERAL INFORMATION

### Visa Requirements

EU citizens do not need visa for Turkey.

United States of America: Ordinary and official passport holders are required to have visa to enter Turkey, which can be obtained at the Turkish airports or border gates.

Other countries check: <http://www.mfa.gov.tr>

### Travel Information

Travelling to Istanbul is easy. There are two international airports which are the destinations of almost every airline. There are also two central bus stations (located on both the Asian and European sides of the city) to/from international coach carrier services arrive and depart and two international rail stations (located on both the Asian and European sides of the city).

### Official Carrier/ Star Alliance

EOS 2011 participants may benefit from the discounted fares (depending on the fare chosen) for their flights to / from Istanbul for the 87th EOS Congress, with 21 Star Alliance member air carriers.

Please check [www.eos2011.com](http://www.eos2011.com) for further details before you book your ticket to Istanbul.

### Train

#### Long-distance trains

International services from the Sirkeci Central Railway Station (on the European side) include the Bosfor Ekspres service leaving at 10 pm on Monday, Wednesday, Friday and Saturday, going to Budapest (duration 33 hours). There is also a slow daily service (the Dostluk/Filia Ekspres) to Thessaloniki (duration 16 hours) departing at 8 pm, where you can connect with trains to Athens. Trains from the Asian side of Turkey and from points east and south, terminate at the Haydarpaşa Central Railway Station, which is on the Asian shore of the Bosphorus.

### Bus

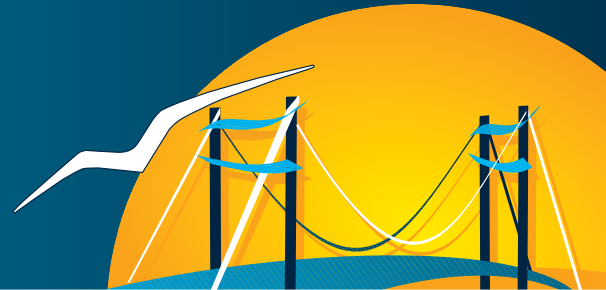
#### Intercity & International buses

Many of the domestic & international coach carriers' offices are located in around the Taksim Square, on Mete Caddesi and İnönü Caddesi, as well as at the Esenler Central Bus Station, on the European side of Istanbul. Here is a list of the top national lines:

**Kamil Koç** (+90 212 252 7223; [www.kamilkoc.com.tr](http://www.kamilkoc.com.tr). İnönü Caddesi 31, Taksim) Services to/from most major cities throughout Turkey.

**Ulusoy** (+90 212 244 6375; [www.ulusoy.com.tr](http://www.ulusoy.com.tr). İnönü Caddesi 59, Taksim) Ulusoy runs twice-weekly buses to and from Greece, Germany and France, as well as services to/from most major cities in Turkey.

**Varan Turizm** (+90 212 251 7474; [www.varan.com.tr](http://www.varan.com.tr). İnönü Caddesi 29B, Taksim) Varan is a premium carrier with routes to/from major Turkish cities and to several points in Europe, including Athens.



## REGISTRATION

<b>Member Fees</b>	<b>before 1 April</b>	<b>after 1 April</b>
EOS member fee*	€ 440	€ 540
WFO member fee*	€ 525	€ 625
Life member fee*	€ 200	€ 240
Post-graduate student fee, member**	€ 140	€ 200
<b>Non-member Fees</b>		
Regular participant fee	€ 560	€ 660
Post-graduate student fee, non-member**	€ 180	€ 250
<b>Accompanying persons</b>		
Accompanying person's fee	€ 100	€ 150
<b>Courses</b>		
Pre-Congress Course (Sunday, 19 June)	€ 275	€ 325
Postgraduate Course (Sunday, 19 June)		
EOS Member Fee	€ 40	€ 70
Non-member Fee	€ 140	€ 170
Post-Congress Course (Thursday, 23 June)	€ 275	€ 325
<b>Social Events</b>		
Opening Ceremony and Welcome Cocktail		Free of Charge
President's Reception		Free of Charge
Gala Dinner	€ 100	€ 120
Postgraduate Disco Night		€ 0 / € 25 (non-postgraduates)
Congress Outing and Silver Mill Competition		€ 120
Golf Tournament		Free of Charge
<b>Tours</b>		
<b>Daily City Tours</b>		
Tour 1 / Istanbul Old City Tour / Free for Accompanying Persons / Monday, 20 June		€ 90
Tour 2 / Spice Bazaar & Bosphorus by Cruise / Monday, 20 June		€ 70
Tour 3 / The Golden Horn Tour / Monday, 20 June		€ 55
Tour 4 / The Golden Horn Tour / Tuesday, 21 June		€ 85
Tour 5 / The Old Istanbul Tour / Tuesday, 21 June		€ 90
Tour 6 / A Unique Opportunity in Istanbul: Hamam / Tuesday, 21 June		€ 120
Tour 7 / Dolmabahce Palace Museum & Lunch Cruise on Bosphorus & Spice Market / Wednesday, 22 June		€ 60
Tour 8 / Istanbul, Roman and Ottoman / Wednesday, 22 June		€ 60
Tour 9 / A Unique Opportunity in Istanbul: Hamam (Turkish Bath) Experience at Galatasaray Hamami & The Galata Tower / Wednesday, 22 June		€ 110
<b>Post Congress Tours</b>		
Post-Congress Tour 1 / Aegean Tour / 2 days - 1 night / by plane / Departure: Friday, 24 June / Arrival : Saturday, 25 June		€ 850 / € 100 single suppl.
Post-Congress Tour 2 / Dardanelles / 3 days - 2 nights / Departure: Thursday, 23 June / Arrival : Saturday, 25 June		€ 600 / € 100 single suppl.
Post-Congress Tour 3 / Cappadocia / 2 days - 1 night by plane Departure: Friday, 24 June / Arrival : Saturday, 25 June		€ 600 / € 100 single suppl.
Post-Congress Tour 4 / Blue Voyage / 7 days - 6 night by plane Departure: Friday, 24 June / Arrival : Thursday, 30 June		€ 750 / € 100 single suppl.

Please note!

\* Membership status will be checked base on membership lists, \*\* Copy of students certificate or student card is required to prove student status.



## REGISTRATION

### Registration

Registration is required for all participants and accompanying persons. Individual registrations are available via the online Registration Form at [www.eos2011.com](http://www.eos2011.com)

For company group bookings, please request further instructions from the Registration office:

Tel: +90 212 291 1906 • Fax: +90 212 219 0588 • E-mail: [registration@eos2011.com](mailto:registration@eos2011.com)

An additional fee of € 50 will be charged for all onsite registrations.

### The Congress Fee Includes

- Participation in all lectures and access to the exhibition area.
- Congress bag including programme and abstract book.
- Admission to Opening Ceremony & Get-Together Cocktail, Opening of Exhibition.
- Admission to President's Reception.
- Coffee at the exhibition area during the breaks.

### The Accompanying Person's Fee Includes

- Admission to Opening Ceremony & Get-Together Cocktail, Opening of Exhibition.
- Admission to President's Reception.
- Guided Tour 1.

### Payment

Payment in Euros, without any charges to the beneficiary, should be made:

by bank transfer

Bank Name: Garanti Bank A.S.

Account Name: Cnidus Tourism - EOS 2011

Branch: 132-Nisantasi

Account No: 908 2565 (EUR)

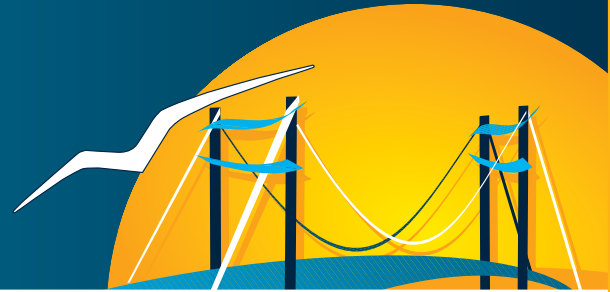
IBAN: TR32 006 2000 1320 0009 0825 65

please send us the bank transfer copy by fax (+90 212 219 0588) or by e-mail [registration@eos2011.com](mailto:registration@eos2011.com)

by Credit Card (Mastercard & Visa are welcome)

### Please Note:

- Payments should clearly state the participant's and/or accompanying person's name(s).
- All payments should have the notification "87th EOS".
- For summary payment orders, please enclose a list of names.
- Payment or proof of payment should accompany the registration form VAT (18%) is included in the registration fee.



## REGISTRATION

### **Confirmation of Registration**

Your registration and all payments will be confirmed in writing upon receipt of your Registration Form and payment proof of payment.

Registration and payments submitted to the Congress PCO after 10 June, 2011 may not be confirmed in writing. In this case please bring the copy of the Registration Form, as well as the proof of payment of your registration fee with you.

### **Changes to applications**

Changes to your original application for registration will be charged a handling fee of € 20.

### **Cancellation and Refunds**

All cancellations of registration, which must include your full bank account details, should be sent in writing to the Cnidus PCO ([registration@eos2011.com](mailto:registration@eos2011.com)).

Cancellation received no later than 16 May 2011 will be refunded in full except for the administrative fee of € 50.

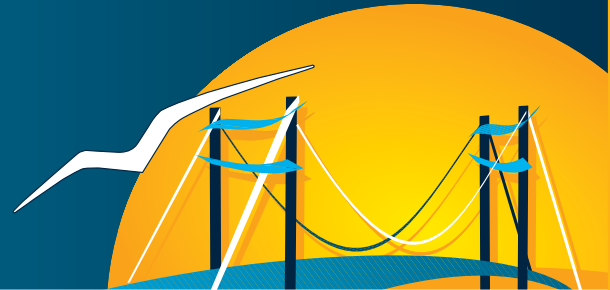
Refunds will be paid after the Congress. Cancellation received after 16 May 2011 will not be refunded.

## ACCOMMODATION

### Booking

A number of rooms in different hotel categories have been booked at the Congress rates. To secure accommodation of your choice, you should register as early as possible. Please note that all room reservations will be made on "first come-first served" basis. Reduced rates are guaranteed and valid only until 1 April 2011. After this date higher rates will apply.

Deluxe	before 1 April		after 1 april	
Prices are per room / per night and include breakfast and VAT (8%)				
<b>Çırağan Palace Kempinsky</b>	<b>sgl</b>	<b>dbl</b>	<b>sgl</b>	<b>dbl</b>
Garden View	€ 525	€ 575	€ 550	€ 600
Bosphorus View	€ 585	€ 635	€ 600	€ 650
<b>Four Seasons Istanbul at the Bosphorus</b>	<b>sgl</b>	<b>dbl</b>	<b>sgl</b>	<b>dbl</b>
Run of the House	€ 480	€ 520	€ 500	€ 540
<b>Special Category</b>				
<b>Pera Palace Hotel</b>	<b>sgl</b>	<b>dbl</b>	<b>sgl</b>	<b>dbl</b>
Deluxe Golden Horn View	€ 310	€ 340	€ 330	€ 360
<b>***** (5 stars hotels)</b>				
Prices are per room / per night and include breakfast and VAT (8%)				
<b>Hilton Otel Istanbul</b>	<b>sgl</b>	<b>dbl</b>	<b>sgl</b>	<b>dbl</b>
Garden View	€ 230	€ 250	€ 250	€ 270
Bosphorus View	€ 280	€ 300	€ 300	€ 320
<b>Ceylan-Inter Continental Otel</b>	<b>sgl</b>	<b>dbl</b>	<b>sgl</b>	<b>dbl</b>
Garden View	€ 205	€ 210	€ 225	€ 230
Bosphorus View	€ 255	€ 260	€ 275	€ 280
<b>Divan Otel</b>	<b>sgl</b>	<b>dbl</b>	<b>sgl</b>	<b>dbl</b>
	€ 250	€ 250	€ 280	€ 280
<b>Grand Hyatt Istanbul</b>	<b>sgl</b>	<b>dbl</b>	<b>sgl</b>	<b>dbl</b>
	€ 250	€ 270	€ 270	€ 290
<b>The Marmara Istanbul</b>	<b>sgl</b>	<b>dbl</b>	<b>sgl</b>	<b>dbl</b>
Garden View	€ 270	€ 290	€ 290	€ 310
Bosphorus View	€ 300	€ 320	€ 320	€ 340
<b>The Ritz Carlton</b>	<b>sgl</b>	<b>dbl</b>	<b>sgl</b>	<b>dbl</b>
	€ 295	€ 315	€ 315	€ 335
<b>W Istanbul</b>	<b>sgl</b>	<b>dbl</b>	<b>sgl</b>	<b>dbl</b>
Run of the House	€ 250	€ 270	€ 270	€ 290
<b>Elite World Istanbul</b>	<b>sgl</b>	<b>dbl</b>	<b>sgl</b>	<b>dbl</b>
	€ 190	€ 210	€ 210	€ 230
<b>Ramada Plaza Istanbul</b>	<b>sgl</b>	<b>dbl</b>	<b>sgl</b>	<b>dbl</b>
	€ 170	€ 190	€ 190	€ 210



## ACCOMMODATION

### \*\*\*\* ( 4 stars hotels)

Prices are per room / per night and include breakfast and VAT (8%)

<b>Hilton Parksa</b>	<b>sgl</b>	<b>dbl</b>	<b>sgl</b>	<b>dbl</b>
Sea View	€ 210	€ 230	€ 220	€ 250
	€ 245	€ 265	€ 265	€ 285
<b>The Sofa Hotel</b>	<b>sgl</b>	<b>dbl</b>	<b>sgl</b>	<b>dbl</b>
	€ 250	€ 270	€ 270	€ 290
<b>Mega Residence Hotels</b>	<b>sgl</b>	<b>dbl</b>	<b>sgl</b>	<b>dbl</b>
	€ 225	€ 245	€ 245	€ 265
<b>Bentley Otel</b>	<b>sgl</b>	<b>dbl</b>	<b>sgl</b>	<b>dbl</b>
	€ 140	€ 160	€ 160	€ 180
<b>Midtown Hotel</b>	<b>sgl</b>	<b>dbl</b>	<b>sgl</b>	<b>dbl</b>
	€ 200	€ 220	€ 220	€ 240
<b>Taxim Square Hotel</b>	<b>sgl</b>	<b>dbl</b>	<b>sgl</b>	<b>dbl</b>
	€ 105	€ 120	€ 120	€ 140
<b>Hotel Lamartine Istanbul</b>	<b>sgl</b>	<b>dbl</b>	<b>sgl</b>	<b>dbl</b>
	€ 190	€ 210	€ 210	€ 230
<b>Konak Hotel</b>	<b>sgl</b>	<b>dbl</b>	<b>sgl</b>	<b>dbl</b>
	€ 195	€ 215	€ 215	€ 225
<b>Eresin Taxim Hotel</b>	<b>sgl</b>	<b>dbl</b>	<b>sgl</b>	<b>dbl</b>
	€ 235	€ 260	€ 255	€ 280
<b>Eresin Taxim Premier</b>	<b>sgl</b>	<b>dbl</b>	<b>sgl</b>	<b>dbl</b>
	€ 260	€ 280	€ 280	€ 300
<b>The Green Park Hotels &amp; Resorts</b>	<b>sgl</b>	<b>dbl</b>	<b>sgl</b>	<b>dbl</b>
	€ 210	€ 230	€ 230	€ 250
<b>Taksim Hill Hotel</b>	<b>sgl</b>	<b>dbl</b>	<b>sgl</b>	<b>dbl</b>
	€ 150	€ 170	170	190
<b>The Marmara Pera</b>	<b>sgl</b>	<b>dbl</b>	<b>sgl</b>	<b>dbl</b>
Sea View	€ 140	€ 160	€ 160	€ 180
	€ 170	€ 190	€ 190	€ 210
<b>Titanic City Hotel</b>	<b>sgl</b>	<b>dbl</b>	<b>sgl</b>	<b>dbl</b>
	€ 190	€ 210	€ 210	€ 230
<b>Elite World Prestige</b>	<b>sgl</b>	<b>dbl</b>	<b>sgl</b>	<b>dbl</b>
	€ 140	€ 160	€ 160	€ 180
<b>Larespark Hotel</b>	<b>sgl</b>	<b>dbl</b>	<b>sgl</b>	<b>dbl</b>
	€ 210	€ 230	€ 230	€ 250
<b>Nippon Hotel</b>	<b>sgl</b>	<b>dbl</b>	<b>sgl</b>	<b>dbl</b>
	€ 190	€ 220	€ 210	€ 240
<b>Taksim Metropark</b>	<b>sgl</b>	<b>dbl</b>	<b>sgl</b>	<b>dbl</b>
	€ 100	€ 120	€ 120	€ 140

Other types of accommodation (3 stars hotels, hostels, private rooms) are available on request. Please contact the accommodation organiser for more details: [registration@eos2011.com](mailto:registration@eos2011.com)

## ACCOMMODATION

### 1. The Hilton Istanbul

The Hilton Istanbul is situated on of beautiful gardens overlooking the Bosphorus. Featuring an extensive selection of business and leisure facilities in a superb environment the Hilton Istanbul is just the experience the modern traveller is looking for. The Hilton Istanbul is just a 5 minutes walk from the ICEC.



### 2. The Marmara

Exceptional comfort and service, worlds of privilege you'll find nowhere else await you at The Marmara Istanbul. Guests at The Marmara Istanbul enjoy a luxurious stay in the heart of Istanbul's vibrant cultural and commercial centre, Taksim. The Marmara Istanbul offers a view as far as the eye can see, encompassing the Bosphorus and the Seraglio Point Topkapi. The hotel is located about a 15 minutes walk from the ICEC.



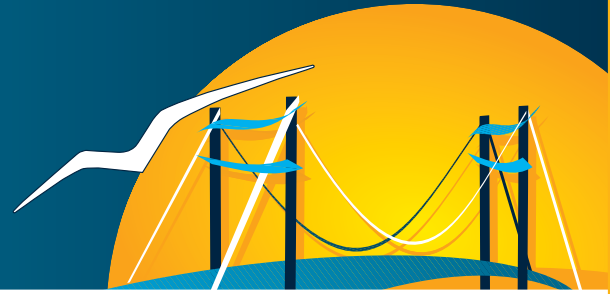
### 3. Divan Hotel

Traditional Turkish hospitality combined with international standards of modern-day business methods and efficiency, prove an incomparable combination, and the Divan Istanbul remains, a symbol of distinction in the world of Turkish hotel management. Divan Hotel is 10 minutes walking distance from the ICEC.

### 4. The Ritz Carlton

Located in the centre of the European side of the city The Ritz Carlton is just 15 minutes walking distance from the ICEC. The spacious marble lobby affords a stunning panoramic view from Europe across the Bosphorus to Asia and is referred to by Istanbul as the "Meeting Point".





## ACCOMMODATION

### **5. Hyatt Regency Istanbul**

Located in the heart of the city's business district every one of Hyatt Regency Istanbul's rooms offers special amenities that distinguish Hyatt from other hotels worldwide. Hyatt Regency stands alone for its variety of restaurants and bars. The hotel is 10 minutes walking distance from the ICEC.



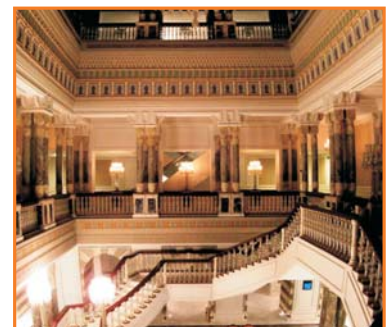
### **6. Ceylan Inter-Continental**

The Ceylan Inter-Continental Istanbul is the perfect base to enjoy the pleasures of this bustling and exciting city. An oasis of calm and sophistication for the discerning international traveler the Inter-Continental is located a 10 minutes walk to the ICEC.



### **7. Conrad International Istanbul**

A masterful blend of stunning contemporary design and elegant tradition, Conrad International Istanbul's unique location, superb facilities and the array of services make it perfect place to relax or. From the warm welcome of the staff to authentic Turkish shoe shining your request will be our pleasure.



### **8. Çırağan Palace Kempinski**

Çırağan Palace once the residence of the last Ottoman Sultans, has been restored to its former glory and is the only luxury hotel on the European shores of the Bosphorus. The Sultan's Palace, built in wood at the end of the 16th century and then rebuilt in 1857, and renovated in 1986.



## ACCOMMODATION

### Payment

Payment in euros without any charges to the beneficiary should be made

#### by bank transfer

**Bank Name:** Garanti Bank A.S.

**Account Name:** Cnidus Tourism - EOS 2011

**Branch:** 132-Nisantasi

**Account No:** 908 2565 (EUR)

**IBAN:** TR32 006 2000 1320 0009 0825 65

please send us the bank transfer copy by fax (+90 212 219 0588) or by e-mail [registration@eos2011.com](mailto:registration@eos2011.com)

#### by credit card (Visa, Mastercard and American Express)

### Cancellation Policy

Possible cancellations or changes to reservations should be made in writing or by e-mail ([registration@eos2011.com](mailto:registration@eos2011.com)) to Cnidus PCO.

Room reservation cancellation charges (applicable to individual reservation):

- before 16 May 2011 No cancellation charges
- 16 May - 30 May 2011 One night's room charge for each room cancellation
- 1 June - 15 June 2011 Two night's room charge for each room cancellation
- 24 hour prior arrival or no show 100% of the charge value for each room cancellation

### Confirmation

As soon as the "Registration&Accommodation and Transfer Registration Form" and payment are received a confirmation letter will be sent in two business days. All accommodation reservations will be completed based on request which will be subject to availability.

Confirmation for hotel accommodation and transfers will be included in the confirmation letter, which should be delivered to the hotel reception upon arrival to the hotel.

### Transfers

Shuttle Bus Transfer Service will be organised from Ataturk International Airport to Congress Venue and return. Individual service, private car or van transfer can be organised on request. Please contact Cnidus PCO for more details ([info@eos2011.com](mailto:info@eos2011.com)).

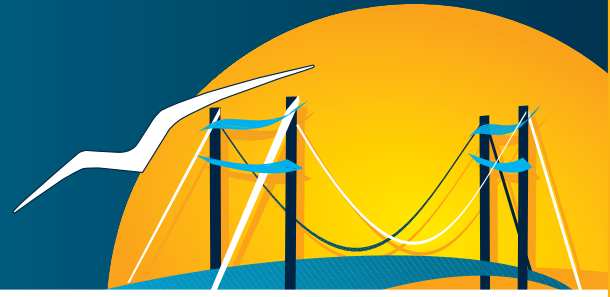
Arrival Shuttle Service available on 18 June Saturday, 19 June Sunday and 20 June Monday

Departure Shuttle Service available on 22 June Wednesday and 23 June Thursday

One way shuttle transfer by private car: Airport to Congress Venue - € 70 per person

Arrival and Departure transfers have to be settled in full by credit card or via bank transfer. and booked before 3 June, Friday 2011.

**87<sup>th</sup> Congress of the  
European Orthodontic Society**  
19-23 June 2011, Istanbul - Turkey



## ACCOMMODATION

### Contact

For any information you may directly contact **Cnidus PCO**

**cnidus**<sup>®</sup>

Valikonagi Cad. Akkavak Sok. Karahan Apt. K.2 D.7-8 34365 Nisantasi, Istanbul - Turkey

Tel: +90 212 291 19 06

Fax: +90 212 219 05 88

e-mail: [cnidus@cnidus.com](mailto:cnidus@cnidus.com)



[www.eos2011.com](http://www.eos2011.com)

